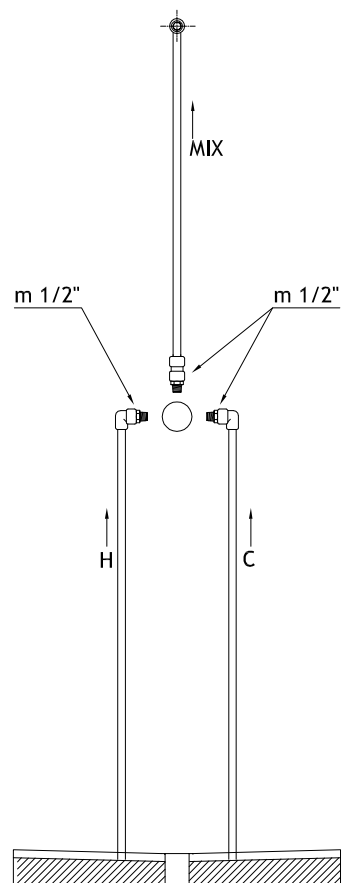
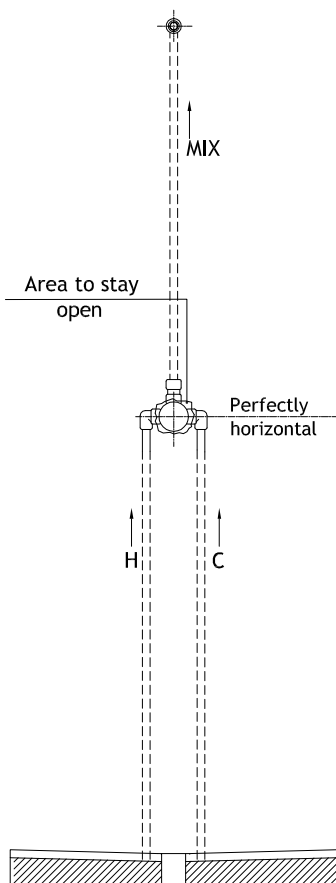
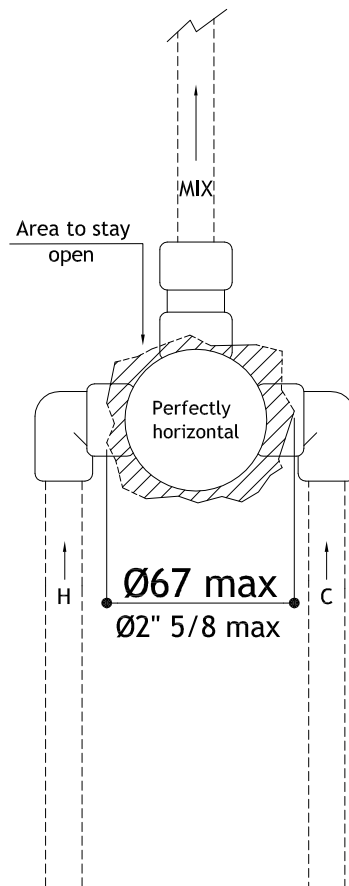
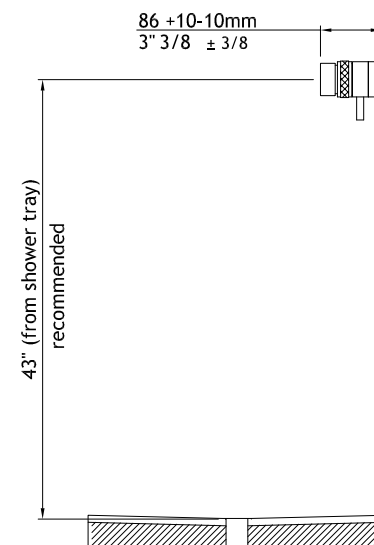


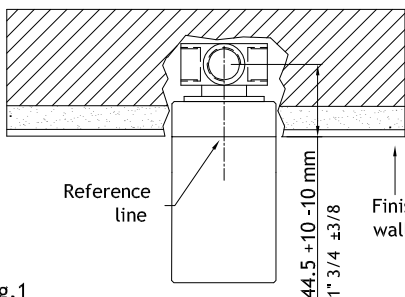
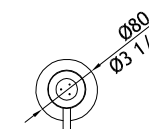
## PLUMBING CONNECTION

WALL DETAILS  
(After Plumbing)DETAILS FOR WALL  
COVERING

## RECOMMENDED POSITIONS



## FRONT VIEW



## WARNING

- 1- The thermostatic mixer body must be installed so that the reference line on the protection cover will correspond to the future finished wall level.
- 2- Check that thermostatic mixer body and protection cover are perfectly horizontal.
- 3- Never close output nozzle. For testing check that the valve is closed.

Fig.1

MGS Progetti srl

Corso Milano, 189 - 28883 Gravellona Toce (VB) - Italy

www.mgsprogetti.com - E-mail: info@mgsprogetti.com - Tel.: +39 0323 865218 - Fax: +39 0323 865215

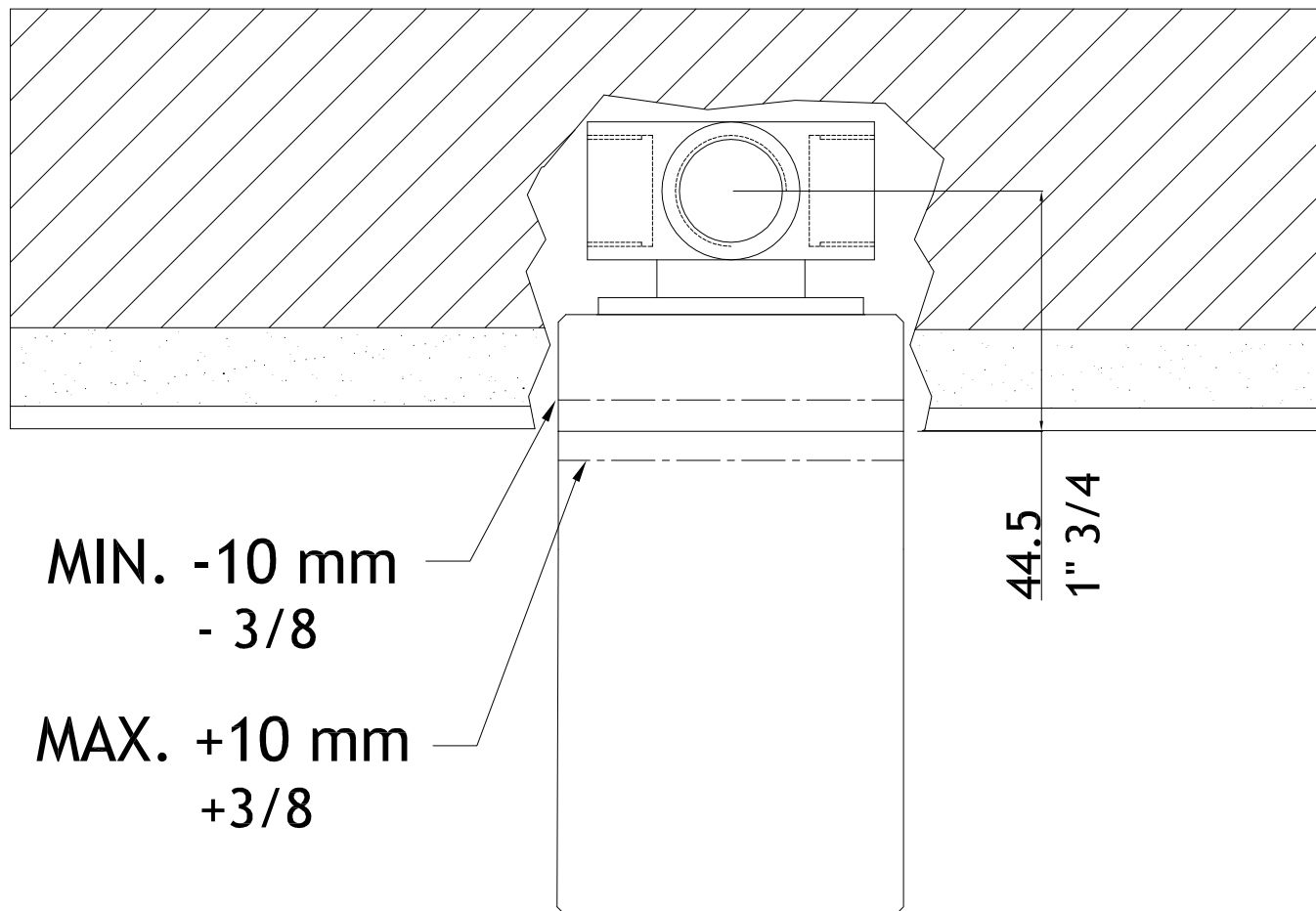
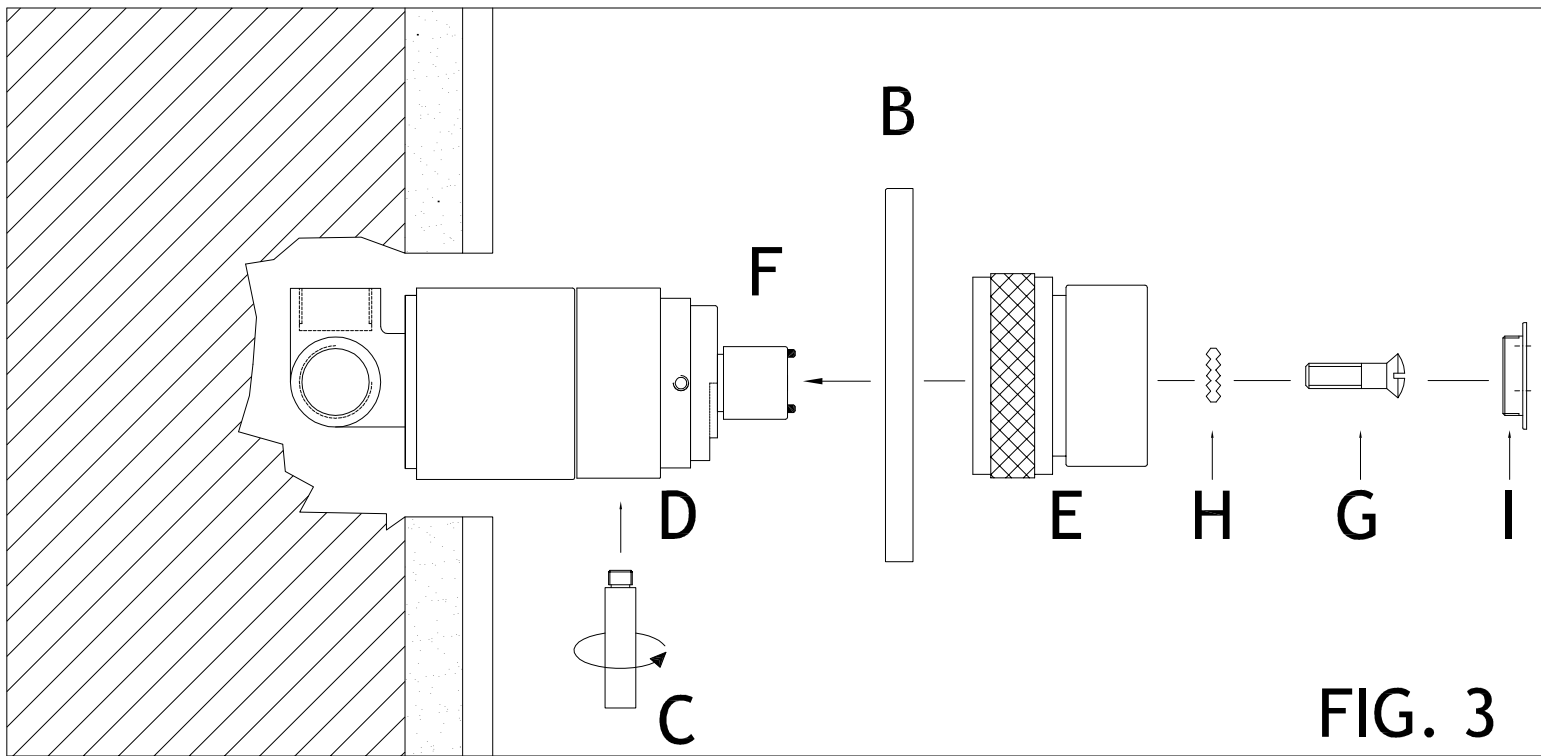
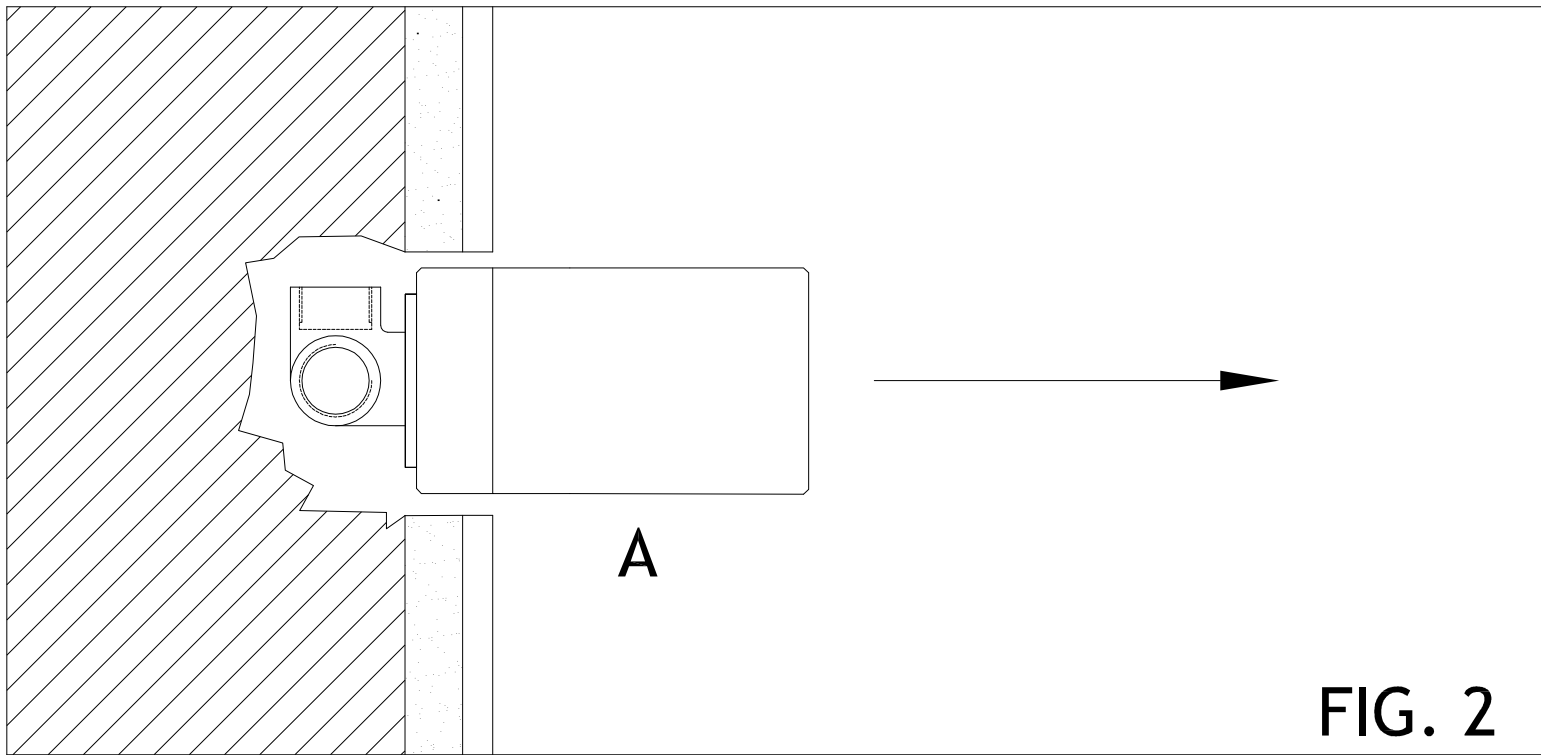
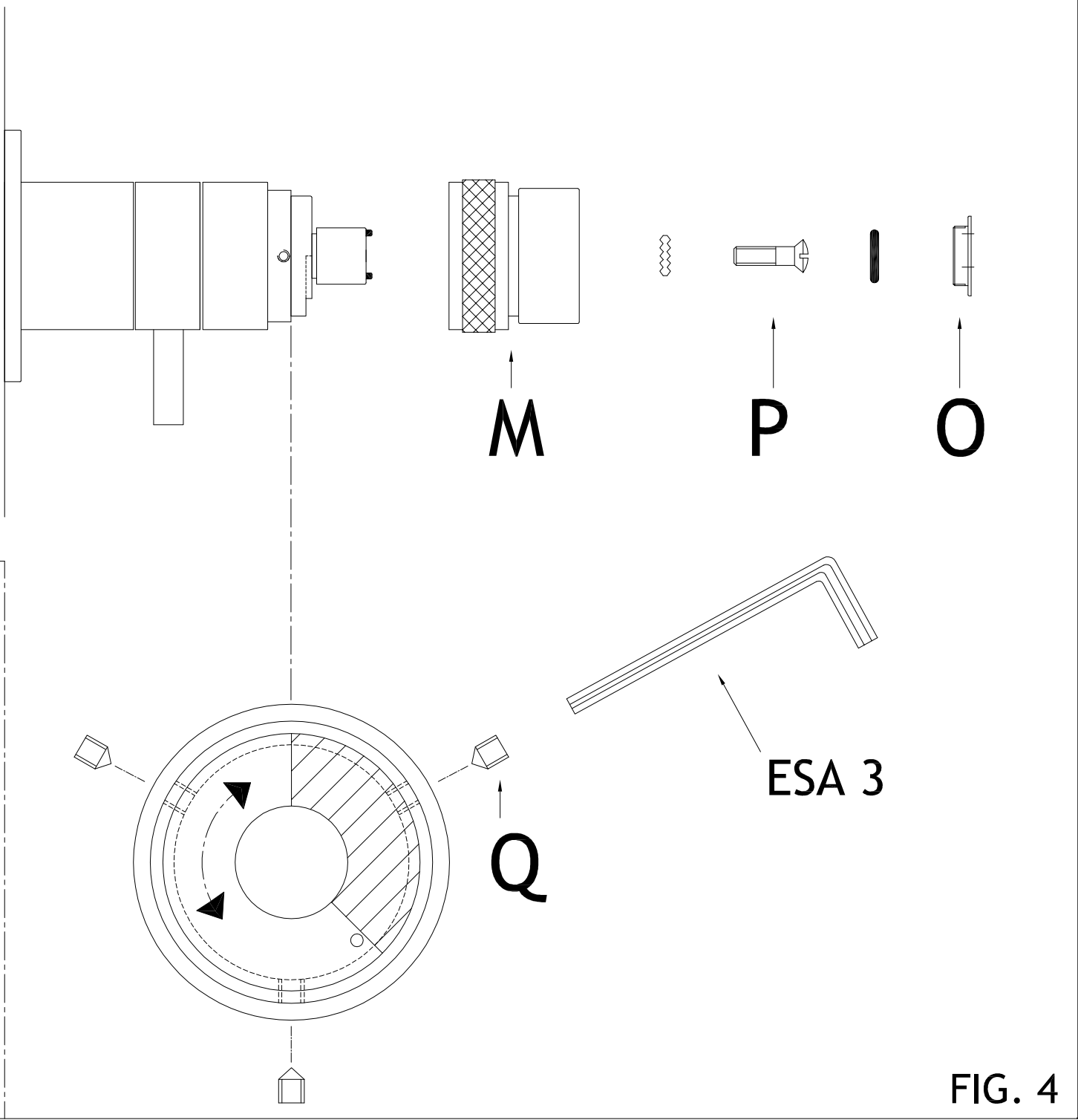
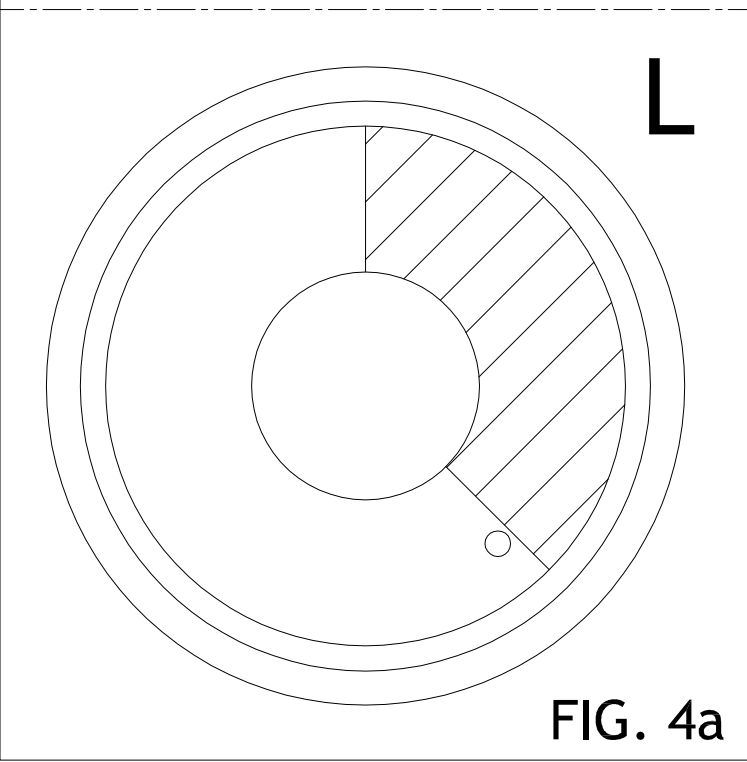
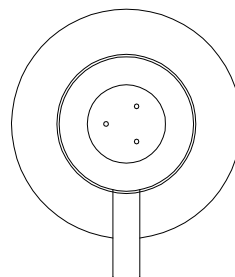
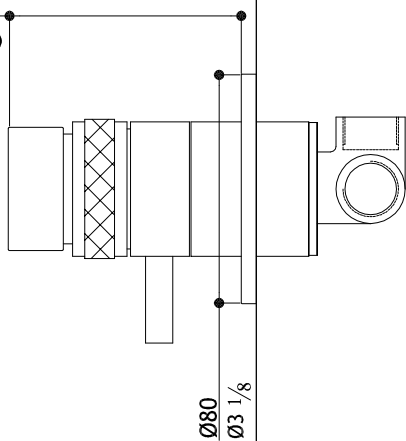


FIG. 1





86 (+10 -10mm)  
3  $\frac{3}{8}$  (+ $\frac{13}{32}$  - $\frac{13}{32}$ )



MGS Progetti srl

Corso Milano 189 28883 Gravellona Toce (VB) Italy

Tel.: +39 0323 865218 Fax: +39 0323865215

www.mgstaps.com E-mail: info@mgstaps.com

## **ASSEMBLY INSTRUCTIONS THERMOSTATIC SHOWER MB 428**

### **FIRST STEP**

Remove various parts from the carton with extreme care.

Check on the wall that the built-in thermostatic valve is clean and that installation has been made correctly according to our separate pre-assembly instructions. In particular, check that the coloured line indicated on the plastic protection lid is positioned +/-10 mm with respect to the wall level (FIG 1) and that the shower finishing rings cover the wall cut area.

**IMPORTANT:** make sure that the valve is closed by fully turning its plastic body clockwise

### **ASSEMBLY OF MAIN HANDLE WITH THERMOSTATIC CONTROL**

(FIG 2)

Remove protection lid (A) from the valve body.

(FIG 3)

- Place trim ring (B) on valve body pushing it against the wall.
- Screw lever (C) onto body (D)
- Place knob (E) on the valve's central shaft (F) and rotate until the 3 pins appear through the holes.
- Tighten firmly with screw M4 (G) after positioning washer (H).
- Close by screwing cover (I) on the handle through enclosed 3 pin tool.

### **CHANGING WATER TEMPERATURE AT STOP POSITION**

(FIG 4) (FIG 4a)

Cam (L) in default position (FIG 4A) determines with an anticlockwise rotation of knob (M) a stop point corresponding to a comfortable warm water temperature. To increase water temperature pull the patterned ring of the knob (M) and continue anticlockwise rotation. By inverting to clockwise rotation the stop point will fall back into position.

To change temperature stop point, remove cover (O), screw (P) and remove knob (M). Loosen 3 allen screws (Q) and change position of cam (L): rotate towards left for warmer water and towards right for colder water. Tighten 3 screws (Q) and reassemble the handle.